

**CASE**  
CONSTRUCTION

## SKID STEER LOADERS

SR130 | SR150 | SR175 | SV185 | SR200 | SR220 |  
SV250 | SR250 | SV300

## COMPACT TRACK LOADERS

TR270 | TR320 | TV380



**Case Delivers Full-Service Solutions**

**EQUIPMENT | FINANCING | PARTS & SERVICE**

# INTRODUCING THE NEXT GENERATION OF CASE SKID STEER CASE COMPACT TRACK LOADERS

## Power and productivity

Case skid steers and compact track loaders have always been known for power and productivity. Now, with nine new skid steers and three new compact track loaders, we've outdone ourselves—and the competition. Our new Alpha Series machines deliver best-in-class horsepower and bucket breakout force—up to 8,585 lb (38.2 kN). By any measure, the new Case Alpha Series will boost your performance and productivity.

## Run-all-day fuel economy

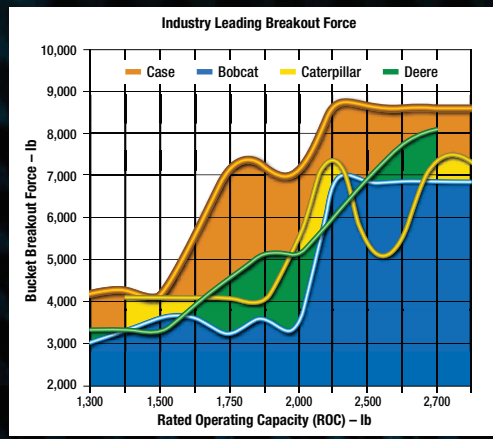
The Alpha Series models also feature larger fuel tanks. Thanks to improved fuel efficiency and new 16–25.5 gallon (60.6–96.5 L) fuel tanks, Case skid steers can easily run for 8–10 hours without refueling.

## Stability to work harder

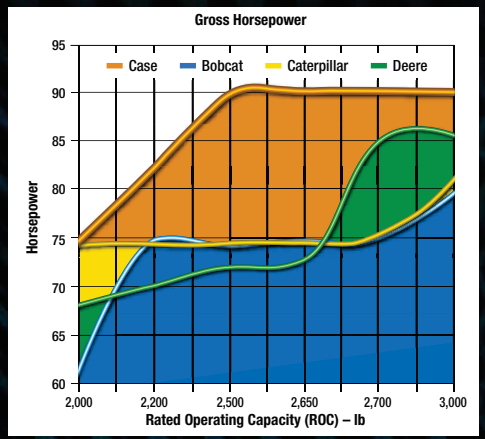
The new Power Stance design features a wheelbase up to 21 percent longer. Movement of the axles toward the ends was achieved with minimal increase to the overall length of the machine. This added stability allows operators to lift and haul more material. The longer wheel base and a front/rear weight distribution of 30/70 keep the center of gravity from moving when the loader arms are raised.



# EEER AND



*Compare us to the competition. You'll feel the superior breakout force.*



*Pound for pound, you get more horsepower with Case.*

# CAB COMFORT

## EASY WINDOW REMOVAL



Standard features include an interior dome light and three-piece side windows that can be removed in seconds without tools.

## Love where you work

Improved visibility, operator comfort, climate management and operator controls define the new Case Alpha Series machines. To begin, the skid steer cabs are 25 percent larger—the widest in the industry. They feature a revolutionary ultra-narrow wire side-screen design that improves operator visibility. Plus, the glass surface was increased to provide 360-degree visibility.

## AIR VENTS



## RADIO



The Alpha Series cabs are fully sealed and pressurized, significantly reducing the amount of noise, dust and exhaust ingress. A new heating and air conditioning system creates a comfortable environment year-round that helps the operator be more productive, ultimately improving your bottom line.

# CONTROLS AND HYDRAULICS

## Cutting edge engineering

All Alpha Series machines come with a choice of controls. Mechanical and Mechanical/Servo controls offer precision touch and feel in the traditional Case “H” pattern hand controls. With these standard controls, you also have the ability to convert your machine to hand & foot controls.

Electro-hydraulic (EH) controls are also available on all Alpha Series models. EH controls allow the operator to switch between Case “H” pattern and “ISO” pattern with a touch of a button. Multiple operators can easily switch between control patterns based on preference.

## SIDE LIGHTS



All models include an advanced instrument cluster with programmable security codes and an automatic shutdown function that responds to warnings and conditions that could endanger the machine.

Integrated hand and foot throttles, and control handles that put functions such as float, auxiliary hydraulics, two-speed, park brake and Ride Control™ literally at your fingertips.

## SEAT



Your choice of regular, suspension or heated air-ride seats.

# AUXILIARY HYDRAULICS

## The power you need for any attachments

The Case Alpha Series skid steers and compact track loaders offer many choices for auxiliary hydraulics. Any of these systems can dramatically increase the machine's versatility by powering a wide variety of hydraulic attachments.

Case provides Connect Under Pressure (CUP) manifolds that release pressure into the standard case drain as auxiliary hydraulic lines are plugged in, enabling quick and easy switching of attachments. This approach eliminates the need for any tools in connecting and disconnecting hydraulic lines.

The Alpha Series has three different auxiliary hydraulic packages available, including standard, high-flow and enhanced high-flow (high-pressure–high-flow). The standard system operates the majority of available hydraulic attachments. High-flow auxiliary hydraulics are required for certain attachments such as cold planers, rock saws, small mulchers, chippers, shredders and some snow blowers. The optional enhanced high-flow auxiliary hydraulics package is only available for large-frame models, and is designed for extreme applications such as large cold planers and mulchers.

Additionally, Case offers secondary auxiliary hydraulics for applications requiring multiple hydraulic movements simultaneously.

### FRONT ELECTRIC



A 14-pin Front Electric system provides four independent activation systems that can be called up with the touch of a button on the control handles.

### CONTROL HANDLE



A standard thumb wheel controls a fully proportional auxiliary hydraulic system, giving the operator pinpoint control of hydraulic flow in either direction. It has detents in both directions for continuous operation, providing less fatigue and more precision results.

### STANDARD



### HIGH-FLOW



### ENHANCED HIGH-FLOW



### SECOND AUXILIARY

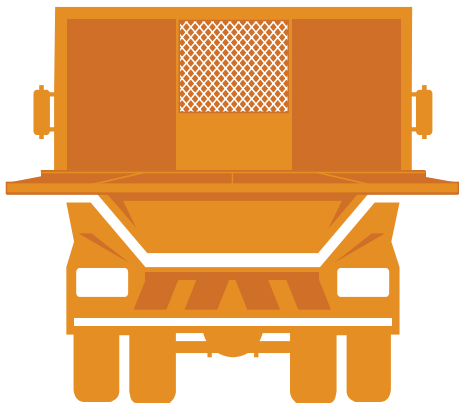


# RADIAL-LIFT AND VERTICAL-LIFT

## CASE OFFERS BOTH

The Alpha Series includes both radial-lift and vertical-lift models. Which is better? The answer is both. It all depends on the application. That is why Case is one of the only manufacturers to offer both throughout the line-up—to make sure the customer has the perfect machine for the job.

**Radial-lift** machines are engineered for digging, prying and pushing. The geometry of the arm ties it directly into the chassis for superior strength when digging and pushing. It also provides maximum reach at the operator's head height—perfect for easy loading and unloading of pallets from trucks.



**Vertical-lift** machines are engineered for lift-and-carry and truck loading. The geometry of the dual-arm allows the load to rise directly up providing maximum reach at full height—ideal for reaching over the side and into the middle of high-side trucks.



# COMPACT CHASSIS

SR130 | SR150

## Big power, small frame

With the introduction of the Alpha Series, Case launches an all-new, compact chassis for the agricultural, rental and landscape markets. It's perfect for working hard in tight spaces. Just because the chassis is compact doesn't mean you sacrifice comfort or the power to do the job. It has the same sized cab as the largest models—with all the same features. When it comes to power, these models provide industry-leading breakout force of 4,275 lb (1939 kg).







### **SR130**



### **SR150**



The Case SR130 and SR150 skid steers offer rated operating capacities (ROC) of 1,300 and 1,500 lb (590 and 680 kg), respectively. Easy to transport with a trailer, both models have an extremely low overall height, at 75 in (1900 mm), making it easier to clear overhead obstacles.

# MEDIUM-FRAME CHASSIS

SR175 | SV185 | SR200 | TR270

## Heart of the lineup

At the heart of the Alpha Series lineup are three skid steers and one compact track loader. These versatile Case machines provide solutions for every application, including radial-lift and vertical-lift models.

The SR175 is the perfect fleet and rental machine. It's at the head of its class, which happens to be the most popular skid steer size in the market. The SV185 offers a vertical-lift version of the same impressive machine. Remember the legendary Case 1845C skid steer? These new machines are built on that legacy with the power and productivity features needed to tackle the toughest jobs.

### SR175



### SV185



### SR200



The SR200 has a bigger engine at 74 hp (55 kW), and adds servo controls for the most demanding jobs in this class.





## Light footprint, stunning performance

The Case TR270 compact track loader is ideal for landscape applications. When protecting the surface is important—as is typical in landscaping jobs—the TR270 is the right choice. Its light footprint applies ground pressure of only 5.2 psi (35.9 kPa).

With an overall width of less than 66 in (1676 mm), this machine fits on most landscape trailers. At an operating weight of 8,200 lb (3720 kg), the TR270 is comfortably under the weight limit that would require using a commercial trailer. With 74 hp (55 kW) and stunning 7,145 lb (3241 kg) of breakout, the TR270 not only leads the industry, but leaves every other machine in the dust.

**TR270**



# LARGE-FRAME CHASSIS

TR320 | TV380 | SR220 | SV250 | SR250 | SV300

## Bigger and better

The Case TR320 compact track loader answers the question of what you get when you take industry-leading breakout and horse power, and add industry-leading tractive force. This tracked version of our flagship SR250 is rewriting the rules. The dozer-style undercarriage and tracks provide maximum stability and power transfer to the ground. When it comes to digging, dozing, pushing and prying, there is no equal.

### TR320



## New size class

With the Alpha Series, Case launches a new size class with the TV380 compact track loader. This 3,800 lb (1723 kg) ROC machine can be upped to a whopping 4,200 lb (1905 kg) ROC when equipped with counterweights. With its vertical-lift design, there isn't much it won't lift and load. In fact, with this much power—there isn't much it can't do.

### TV380



## Tough as they get

Got a tough job? We've got some tough skid steers. Our large-frame Alpha Series machines are the truly dominant members of the industry. They are designed for the toughest jobs that require high capacity and high breakout force. In fact, these machines deliver nearly 8,600 lb (38.2 kN) of breakout force, for best-in-class performance. Their 82–90 hp (61–67 kW) engines are also the highest among other models in this segment. With two radial-lift and two vertical-lift models, you can take your pick to match your needs.

**SV250**



**SV300**



**SR220**



**SR250**



# SERVICEABILITY

## Built-in serviceability

Case has always understood that the easier it is to do routine checks, maintenance and service—the more likely they are to be done. The new Alpha Series has managed to improve on Case's well-regarded reputation.

Despite the fact that all service points have been relocated to the rear, the Alpha Series still has Case's famous easy-tilt cab. With the removal of two nuts, the entire cab swings forward out of the way to open up the entire drivetrain compartment for easy repair and inspection.

A removable side panel provides access to the engine oil filter and environmentally friendly drain. Additionally, the oil cooler and radiator tilt out for easy cleaning.

Vertical lockout handle



Hydraulic pressure release valve



Loader lock devices and hydraulic pressure release valves create better maintenance conditions.



## Easy maintenance

Easy access to filters and engine fluids makes maintenance on the Case Alpha Series models a breeze. The regular maintenance points are grouped in one area so operators do not need to walk around the machine to find specific service points. Maintenance points, such as the tilt-out radiator, fuel filter, battery terminals and engine oil fill are easy to find under the engine compartment cover and door.



The convenient side panel gives access to the battery, remote oil drain and engine oil filter. There is also direct access to the oil pan under the machine for faster oil drainage.



Door-mounted fuel filter for easy access.



Other standard service-related features include a master disconnect switch, sight gauge and easy-access filters.

# ATTACHMENTS

STANDARD HYDRAULICS	STANDARD AUXILIARY HYDRAULICS		STANDARD & HIGH-FLOW AUXILIARY HYDRAULICS
<p><b>PALLET FORK</b></p> 	<p><b>ANGLE BROOM</b></p> 	<p><b>PICK-UP BROOM</b></p> 	<p><b>AUGER</b></p> 
<p><b>ROCK BUCKET</b></p> 	<p><b>BRUSH GRAPPLE</b></p> 	<p><b>SCRAP GRAPPLE</b></p> 	<p><b>TILLER</b></p> 
<p><b>CONCRETE CLAW</b></p> 	<p><b>ROOT RAKE</b></p> 	<p><b>GRADER RAKE</b></p> 	<p><b>ROTARY CUTTER</b></p> 
<p><b>MANURE SCRAPER</b></p> 	<p><b>CONCRETE BUCKET</b></p> 	<p><b>SIDE DISCHARGE BUCKET</b></p> 	<p><b>TRENCHER</b></p> 
<p><b>SNOW PUSH</b></p> 	<p><b>VIBRATORY ROLLER</b></p> 	<p><b>BALE HANDLER</b></p> 	<p><b>SNOW BLOWER</b></p> 



## ENHANCED HIGH-FLOW HYDRAULICS

MULCHER



ROCK SAW



COLD PLANER



## Extreme versatility

At the end of the day, a skid steer is, in essence, a power unit for an attachment. That is why it is important for an industry leader like Case to have a complete offering of high-quality attachments. Case offers more than 70 types (and more than 200 specific models) of attachments for the Alpha Series. This includes augers, rakes, grapples, pallet forks, brooms, dozer blades and hammers, to take on the toughest construction, landscaping and agricultural jobs.



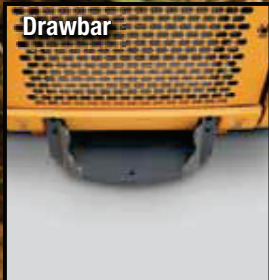
# ACCESSORIES

## Extras and upgrades

Case offers a variety of important accessories that can be installed easily on either new or used equipment. These can help upgrade an existing unit or customize one for a particular job. Case not only has kits for the new Alpha Series, but can also provide kits to upgrade previous models, whether you are looking to add a weight kit, or enclose a cab and add air-conditioning.

If your upgrade is more than you are comfortable with, your local Case dealer will be happy to install any of our kits.

Refer to Genuine Case Parts, Accessories and Service brochure for more information.



Drawbar



Single-point lift



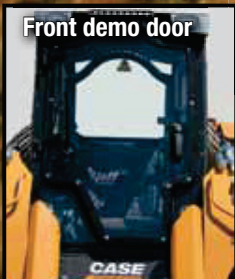
Four-point lift (front)



Four-point lift (rear)



Counterweight kit



Front demo door



Rear door guard insert



Cylinder guards

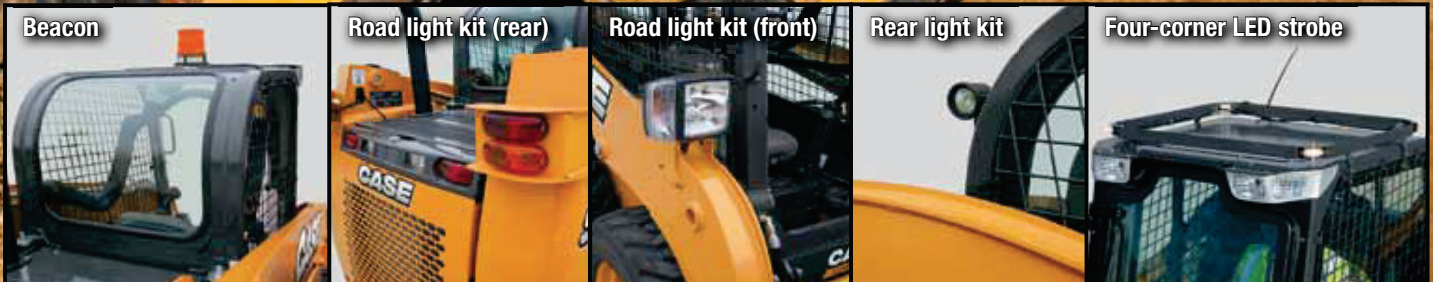


FOPS level 2



## Plug and play

All Case Alpha Series machines are pre-wired to accept any electrical accessory. The weatherproof plug is conveniently located on the back of the cab and there is a separate switch already installed inside on the left post.



# TIRES AND BUCKETS

Case offers seven tire options for the Alpha Series skid steers, ranging in diameter from 10–14 in (254–356 mm), in various tread patterns to meet your working conditions. Six styles of buckets are available as original equipment, ranging in width from 66–84 in (1676–2134 mm). Additional tire options available through Parts.

**4 IN 1 BUCKET**



**HEAVY-DUTY**



**DIRT FOUNDRY**



**LIGHT MATERIAL**



**SNOW BUCKET**



**LOW PROFILE**



**LOW PROFILE EXTENDED**



**MANURE & SLURRY**



**STANDARD DUTY**



**HEAVY-DUTY (XD2002)**



**PREMIUM (BEEFY BABY)**



**SEVERE DUTY (HULK)**



**TIRE TRACKS**



**MINING (KING KONG)**



**FLOTATION (HIPPO)**



**BRAWLER SOLID FLEX**



# UNDERCARRIAGE AND TRACK BELTS

## Dozer-style undercarriage

The new Case Alpha Series compact track loaders feature a dozer-style undercarriage, engineered to hold fast on steep slopes and take command of muddy or sandy terrain. The undercarriage has a rigid-track frame with fewer moving parts for greater durability and easier maintenance than suspension-track systems.

### Heavy-duty drive motor / final drive

Increases component life by using an oversized bearing in line with the drive sprocket and elevating the drive assembly, keeping it out of material.

### Simple hydraulic track adjustment

Track tension is simply adjusted by adding or removing grease to a hydraulic cylinder. Track tension is important to undercarriage life and track life.



### Lifetime sealed and oil lubricated rollers and idlers

Duo-cone face seals utilize proven dozer oil-lubrication technology that provides greater reliability and lower maintenance costs. The seals reduce the possibility of material and moisture getting into the rollers and idlers.



### Triple flange rollers

Helps prevent de-tracking on inclines by using dozer-style rollers with a larger inner-diameter flange positioned between the track lugs.



# TIER 4

## Tier 4 Interim emissions solution



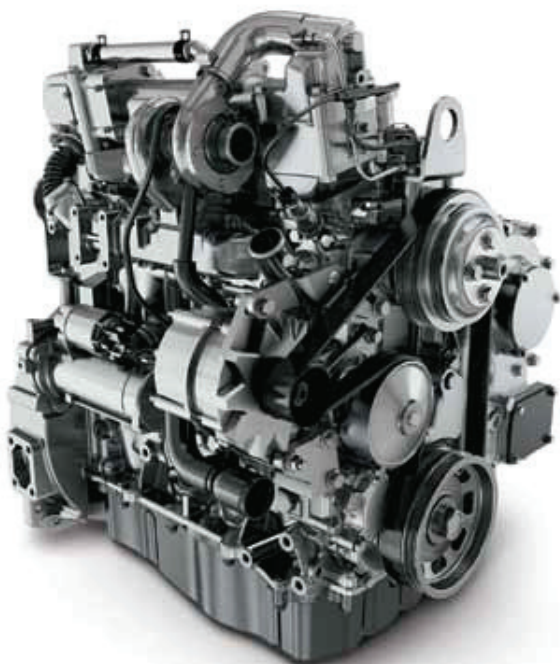
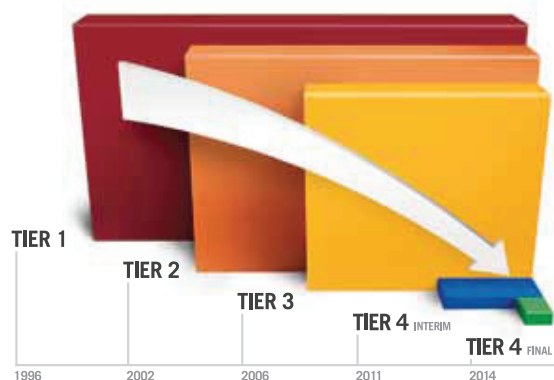
### The Case promise

For more than 170 years, Case equipment has been hard at work. Like our customers, Case has demonstrated a commitment to productivity and quality—getting the job done and getting it done right.

Our emphasis in product development has been on increasing productivity, improving fuel efficiency, increasing uptime through best-in-class serviceability and improving operator comfort. And we've made all of these improvements with an eye to the environment.

### Timing for Tier 4

Tier 4 Interim standards are being introduced in 2011 and 2012. The Tier 4 Final standards begin in 2014. Case is committed to meeting these requirements and doing it in a way that meets your needs for productivity, fuel efficiency and uptime. Meeting Tier 4 emissions requirements is part of getting the job done right. It's part of our commitment as a global corporate citizen to doing what is right for you and the environment. Key to meeting Tier 4 is reducing the main pollutants in emissions: carbon monoxide, hydrocarbons, nitrogen oxides (NOx) and particulate matter (PM). Emissions limits are particularly focused on curbing airborne NOx and PM.



*Diesel particulate filter*

### How CEGR with a diesel particulate filter works to meet Tier 4 Interim emissions

Similar to Tier 3 technologies, re-circulated exhaust gases reduce the NOx levels due to the lower engine operating temperatures, but PM levels increase. The diesel particulate filter manages those increased PM levels by first collecting them in the filter. Then, during normal operating regeneration actions or when initiated by the operator, PM is burned off by introducing diesel fuel through an oxidation catalyst that creates heat.

## You can count on Case

You can count on Case and your Case dealer for full-service solutions—productive equipment, expert advice, flexible financing, genuine Case parts and fast service. We're here to provide you with the ultimate ownership experience.

### Case pride

You can take pride in the Case name on your machine. It's backed by more than a century of productivity and performance. Case and your Case dealer are here for you, not only when you buy the machine, but also after you put 1,000 or 10,000 hours on it.

### A rich, proud history

Case Construction Equipment's heritage spans more than 170 years. Growing from J. I. Case's innovations with steam-powered machinery in the late 1800s, Case developed road-building equipment that helped create early-20th century streets and highways across the world. By 1912, Case was well on its way to establishing itself as a full-line equipment manufacturer and continues to expand its construction equipment business in the 21st century.

### Celebrating a tradition of innovation

In 1957, Case produced the world's first integrated loader/backhoe made and warranted by one manufacturer. Over the decades and into the 21st century, Case has continued to develop a long line of industry firsts and has taken a leadership role in pioneering new products and solutions. Today, Case produces 15 lines of equipment and more than 90 models to meet your toughest construction challenges. Supported by manufacturing and sales in more than 150 countries, Case serves the needs of our customers worldwide.

The Case loader/backhoe history has included a number of important "firsts"—such as the Case-patented Extendahoe extendible dipper stick, return-to-dig and return-to-travel functionality, Ride Control™, side lighting and the Case trademark over-center boom design—that evolved the loader/backhoe into an indispensably versatile fixture in the construction equipment industry.

### Coast-to-coast customer support

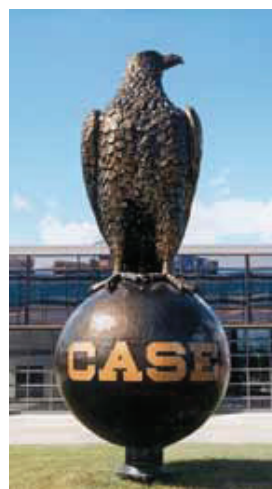
In North America, Case equipment is sold and serviced by more than 375 dealer locations. No matter where you work, we're here to support and protect your investment and exceed your expectations.

To locate a Case dealer or learn more about Case equipment or customer service, go to [www.casece.com](http://www.casece.com) or call 1-866-54CASE6. For flexible financing options, dependable parts and fast service, your Case dealer is here to meet your needs.

It all adds up. You can count on Case.

## Case Delivers Full-Service Solutions

**EQUIPMENT | FINANCING | PARTS & SERVICE**



Engines in the Alpha Series skid steer family range from 46 hp (34 kW) to 90 hp (67 kW) with rated operating capacities ranging from 1,300 lb (590 kg) in the SR130, to 3,000 lb (1360 kg) in the SV300.

The Case Alpha Series compact track loaders deliver 74 hp (55 kW) in the TR270, and 90 hp (67 kW) in both the TR320 and TV380. Rated operating capacities range from 2,700 lb (1226 kg) to 3,800 lb (1723 kg).

## SKID STEER LOADERS

### SMALL- AND MEDIUM-FRAME MODELS

SPECIFICATIONS	SR130	SR150	SR175	SV185	SR200
<b>Lift configuration</b>	Radial	Radial	Radial	Vertical	Radial
<b>Engine</b>	ISM N844L/M4	ISM N844LT/M4	ISM N844LT/M4	ISM N844LT/M4	Case 432T/M4
Gross hp (kW)	46 (34) @ 2900 RPM	52 (39) @ 2900 RPM	60 (45) @ 2900 RPM	60 (45) @ 2900 RPM	74 (55) @ 2500 RPM
Net hp (kW)	43 (32) @ 2900 RPM	49 (36) @ 2900 RPM	57 (42) @ 2900 RPM	57 (42) @ 2900 RPM	70 (52) @ 2500 RPM
Peak torque lb-ft (N-m)	96.3 (130.5) @ 1750 RPM	109 (148) @ 1750 RPM	126 (171) @ 1800 RPM	126 (171) @ 1800 RPM	203 (275) @ 1400 RPM
Displacement – in <sup>3</sup> (L)	122 (2.0)	122 (2.0)	135 (2.2)	135 (2.2)	195 (3.2)
<b>Rated operating load</b>					
50% – lb (kg)	1,300 (590)	1,500 (680)	1,750 (790)	1,850 (840)	2,000 (905)
<b>Tipping load – lb (kg)</b>	2,600 (1179)	3,030 (1374)	3,500 (1588)	3,700 (1678)	4,000 (1814)
<b>Breakout force</b>					
Bucket cylinder – lb (kN)	4,275 (19.0)	4,275 (19.0)	7,145 (31.8)	5,435 (24.2)	7,145 (31.8)
<b>Auxiliary hydraulics</b>					
Standard – gpm (L/min)	15.6 (59)	15.6 (59)	19.0 (72)	19.0 (72)	22.5 (85)
High-flow – gpm (L/min)	—	—	28.5 (108)	28.5 (108)	30.7 (116)
<b>Operating weight – lb (kg)</b>	5,000 (2270)	5,300 (2400)	6,200 (2812)	6,500 (2950)	6,900 (3130)

## SKID STEER LOADERS

### LARGE-FRAME MODELS

SPECIFICATIONS	SR220	SV250	SR250	SV300
<b>Lift configuration</b>	Radial	Vertical	Radial	Vertical
<b>Engine</b>	Case 434T/E4	Case 434T/E4	Case 434T/E4	Case 434T/E4
Gross hp (kW) @ 2500 RPM	82 (61)	82 (61)	90 (67)	90 (67)
Net hp (kW) @ 2500 RPM	76 (57)	76 (57)	84 (63)	84 (63)
Peak torque lb-ft (N-m) @ 1400 RPM	257 (349)	257 (349)	282 (383)	282 (383)
Displacement – in <sup>3</sup> (L)	207 (3.4)	207 (3.4)	207 (3.4)	207 (3.4)
<b>Rated operating load</b>				
50% – lb (kg)	2,200 (1000)	2,500 (1135)	2,500 (1135)	3,000 (1361)
<b>Tipping load – lb (kg)</b>	4,400 (2000)	5,000 (2268)	5,000 (2268)	6,000 (2722)
<b>Breakout force</b>				
Bucket cylinder – lb (kN)	8,700 (38.7)	7,570 (33.6)	7,480 (33.3)	7,570 (33.7)
<b>Auxiliary hydraulics</b>				
Standard – gpm (L/min)	24.2 (92)	24.2 (92)	24.2 (92)	24.2 (92)
High-flow – gpm (L/min)	37.6 (143)	37.6 (143)	37.6 (143)*	37.6 (143)*
<b>Operating weight – lb (kg)</b>	7,400 (3350)	8,000 (3630)	7,700 (3490)	8,300 (3765)

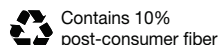
\*Enhanced High-Flow (EHF) option available for 35 gpm (133 L/min) @ 4,000 psi (276 bar).

NOTE: All engines meet current EPA emission regulations.

NOTE: All specifications are stated in accordance with SAE standards or recommended practices, where applicable.

IMPORTANT: Case Construction Equipment Inc. reserves the right to change these specifications without notice and without incurring any obligation relating to such change. Availability of some models and equipment builds vary according to the country in which the equipment is used. The illustrations and text may include optional equipment and accessories and may not include all standard equipment. Your Case dealer/distributor will be able to give you details of the products and their specifications available in your area.

Form No. CCE201211SSLCTL  
Replaces form no. CCE201202SSLCTL



Looking for product specs, customer testimonials, competitive comparisons, finance offers and more?  
Visit us at [www.casece.com](http://www.casece.com) or call 866-54CASE6

## COMPACT TRACK LOADERS

### MEDIUM- AND LARGE-FRAME MODELS

SPECIFICATIONS	TR270	TR320	TV380
<b>Lift configuration</b>	Radial	Radial	Vertical
<b>Engine</b>	Case 432T/M4	Case 434T/E4	Case 434T/E4
Gross hp (kW) @ 2500 RPM	74 (55)	90 (67)	90 (67)
Net hp (kW) @ 2500 RPM	70 (52)	84 (63)	84 (63)
Peak torque lb-ft (N-m) @ 1400 RPM	203 (275)	282 (383)	282 (383)
Displacement – in <sup>3</sup> (L)	195 (3.2)	207 (3.4)	207 (3.4)
<b>Rated operating load</b>			
50% – lb (kg)	2,700 (1225)	3,200 (1451)	3,800 (1723)
35% – lb (kg)	1,890 (859)	2,240 (1018)	2,660 (1209)
<b>Tipping load – lb (kg)</b>	5,400 (2449)	6,400 (2903)	7,600 (3447)
<b>Breakout forces</b>			
Bucket cylinder – lb (kN)	7,145 (31.8)	8,700 (38.7)	7,510 (33.4)
<b>Auxiliary hydraulics</b>			
Standard – gpm (L/min)	22.5 (85)	24.2 (92)	24.2 (92)
High-flow – gpm (L/min)	30.7 (116)	37.6 (143)*	37.6 (143)*
<b>Operating weight – lb (kg)</b>	8,200 (3720)	9,600 (4355)	10,200 (4625)



Always read the operator's manual before operating any equipment. Inspect equipment before using it and be sure it is operating properly. Follow the product safety signs and use any safety features provided.

©2012 CNH America LLC. All rights reserved. Case is a registered trademark of CNH America LLC. Any trademarks referred to herein, in association with goods and/or services of companies other than CNH America LLC, are the property of those respective companies. Printed in U.S.A.



Case construction equipment is biodiesel friendly.

